



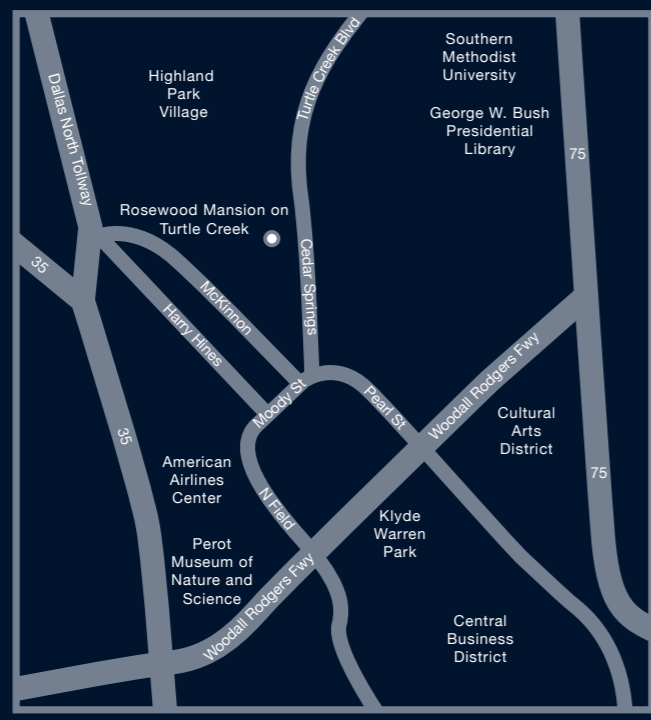
*A magnificent location for extraordinary events, Rosewood Mansion on Turtle Creek® brings history to life in the heart of Dallas. The residentially styled hotel is an exceptional destination for meetings and corporate events as well as a sought-after location for memorable social celebrations. Complemented by the Mansion's outstanding cuisine and impeccable service, the hotel's elegant function rooms and facilities include a ballroom, promenade, four private dining and meeting rooms, an intimate wine cellar, a magnificent outdoor lawn and intimate event garden.*

**142**  
ROOMS + SUITES

**9**  
EVENT SPACES

**2**  
RESTAURANTS + BARS

ROSEWOOD  
MANSION ON TURTLE CREEK®  
DALLAS



ROSEWOOD MANSION ON TURTLE CREEK

TEL: +1 214 559 2100 | FAX: +1 214 528 4187

ROSEWOODHOTELS.COM/MANSION | THEMANSION@ROSEWOODHOTELS.COM

ROSEWOOD SALES OFFICES

CHICAGO	+1 312 643 2203
DALLAS	+1 214 880 4231
LOS ANGELES	+1 424 363 2620
LONDON	+44 203 189 2126
SAN FRANCISCO	+1 415 694 2377
MIAMI	+1 954 507 6188
NEW YORK	+1 212 593 2252
BEIJING	+86 10 6536 0187
DUBAI	+971 4 380 6400
HONG KONG	+852 2138 2336
SINGAPORE	+65 9037 0829

2821 TURTLE CREEK BLVD  
DALLAS, TEXAS 75219  
USA



### Private Dining, Meeting & Banquet Facilities

- 18,000 square feet of indoor/outdoor meeting and event space across nine elegant venues including a ballroom, private dining rooms, a wine cellar, outdoor event lawn and garden.
- Suitable for an array of occasions, the residentially styled indoor rooms range from the intimate to the grand and accommodate up to 400 guests while the manicured event lawn provides space for up to 600 guests.
- Wired and wireless high-speed Internet access and full audio/visual services

#### Pavilion Ballroom

Decorated in a contemporary residential style, the Pavilion Ballroom offers 2,232 square feet of space and accommodates events for up to 300 people. The Pavilion adjoins the sun-drenched Promenade reception foyer and is divisible into three separate sections, each able to host up to 70 guests for smaller events.

#### Promenade

The beautiful reception foyer of the Pavilion Ballroom features dazzling windows and elegant chandeliers. Awash in abundant natural light, the Promenade is reminiscent of a glamorous residential conservatory, providing a garden-like setting for lunches, dinners and receptions.

#### Sheppard King Room

Guests enjoy a breathtaking view of Turtle Creek from the spacious Sheppard King Room. An ideal venue for elegant parties, receptions and meetings, the room has the added appeal of an outdoor terrace. The room comfortably seats 70 people for dining and can host up to 100 guests for a reception.

#### FDR Room

A welcoming venue offering 272 square feet of space, the intimate FDR Room is designed for smaller parties and meetings. The room's French doors overlook the hotel's landscaped courtyard and provide access to a terrace that can be utilized for cocktail receptions and meeting breaks.

#### Burford Room

A residentially appointed boardroom for executive conferences, the Burford Room is ideal for quiet, productive business gatherings.

#### Hunt Room

The 437-square-foot Hunt Room, ideal for dining, receptions and meetings, is a residentially styled function space featuring a private entry foyer and faux fireplace.

#### Wine Cellar

An intimate and elegant setting unequalled in Dallas, the Wine Cellar is a splendid venue for small gatherings of up to 14 guests. Originally built as a vault beneath the family home to store silver and other heirlooms, the wood-lined cellar now houses the hotel's enviable wine collection.

#### Mansion Lawn

Beautifully manicured and accentuated with elegant Italian-inspired motifs, the Mansion Lawn is the city's most extraordinary stage for bespoke outdoor wedding celebrations and events accommodating up to 600 people.

#### Mansion Garden

Enclosed behind the Mansion's signature peach stucco walls, the Mansion Garden is intimately scaled providing an exquisite backdrop for a memorable affair up to 80 guests.

#### Accommodation

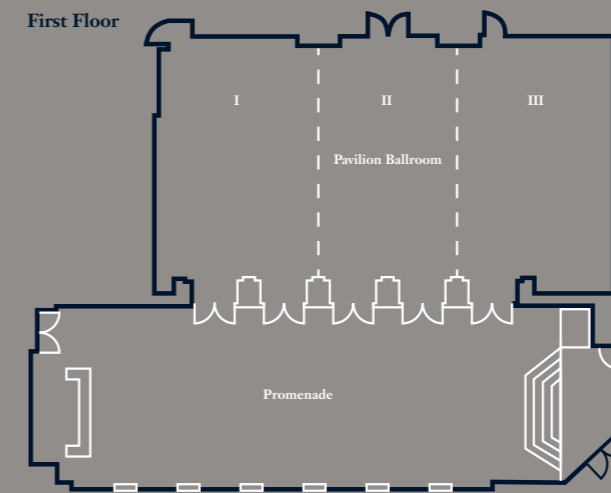
The Mansion's newly redesigned guestrooms reflect the hotel's residential sensibilities and comfortably chic atmosphere. The 126 rooms offer bespoke furnishings, distinctive color palettes and custom artwork, while 16 sumptuous suites offer ample space for relaxing and entertaining. All accommodations feature thoughtful amenities such as a private balcony, 55" plasma TV, private bar and custom bath products.

#### Dining

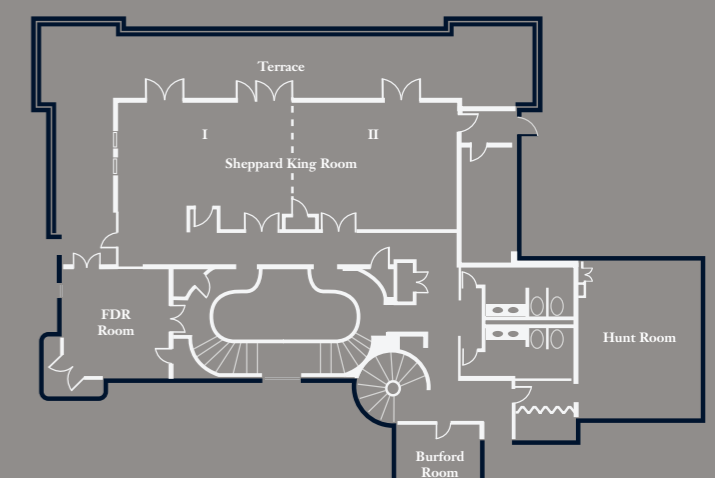
- **THE MANSION RESTAURANT:** Comfortably sophisticated and welcoming, The Mansion Restaurant features new American cuisine with French influences, coupled with the freshest local ingredients. For alfresco dining, cocktails and lounging, the picturesque restaurant terrace presents a breezy, lantern-lit setting beneath a canopy of majestic oak trees.
- **THE MANSION BAR:** An icon of the Dallas scene, the bar offers the ambience of a stylish private club with a modern twist.

	Square feet	Size in feet	Ceiling	Reception	Dining	Theatre	Classroom	Conference
<b>First Floor</b>								
Pavilion Ballroom	2,232	56x36	10'	250	180	300	120	72
Pavilion I	828	23x36	10'	70	60	75	32	24
Pavilion II	684	19x36	10'	70	60	75	32	24
Pavilion III	720	20x36	10'	70	60	75	32	24
Pavilion & Promenade	3,520	56x59	10'	375	280	-	-	-
Promenade	1,288	56x23	10'	125	100	100	-	48
<b>Second Floor</b>								
Sheppard King Room	1,060	53x20	9'2"	100	70	110	56	40
Sheppard King I	558	31x19	9'2"	50	30	50	26	18
Sheppard King II	483	23x21	9'2"	50	40	50	26	18
FDR Room	272	16x17	9'2"	25	20	30	16	16
Burford Room	228	12x19	9'2"	20	10	-	-	10
Hunt Room	437	19x23	8'8"	40	40	42	24	22
<b>Lower Level</b>								
Wine Cellar	336	16x21	7'1"	30	14	-	-	14
<b>Outdoor Event Space</b>								
Mansion Lawn	7,885	95x83	-	600	500	-	-	-
Mansion Garden	1,240	40x31	-	80	60	-	-	-

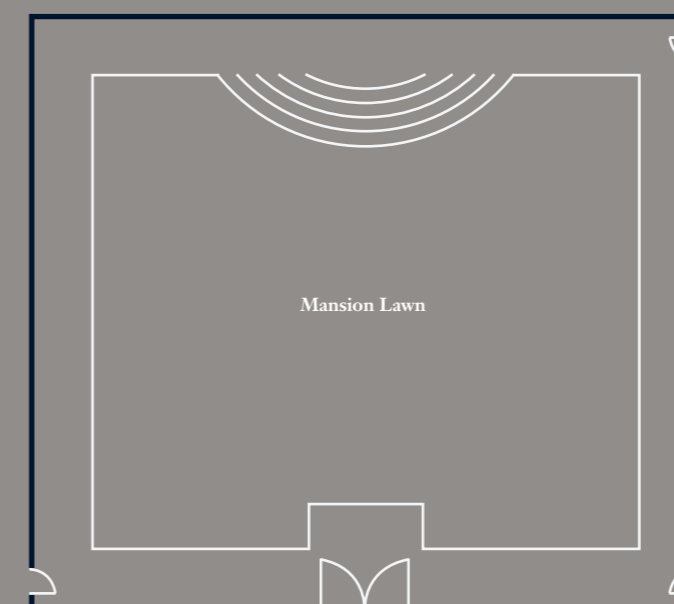
First Floor



Second Floor



Outdoor



Outdoor

